

GOLFZON TWOVISION USER MANUAL

Preface

This manual describes how to use the GOLFZON TWOVISION Plus. Features and specifications may be subject to change without prior notice. Screen images may also be different after software updates.

Intellectual Property

Copyright 2022 GOLFZON Inc. All information contained in this document, including images, is the property of GOLFZON. Copying or reproducing this document in whole or in part by any means is prohibited without prior written consent of GOLFZON.

Notational Conventions



Warning

The Warning sign is a safety alert for possible injury or product damage.

Please read the contents carefully.



Caution

The Caution sign alerts potential unsafe practices. Please read the contents carefully.



Note

The Note sign indicates additional important and useful information.

Introduction

The Golfzon TWOVISION Plus allows you to play simulations of real-life golf courses and driving ranges.

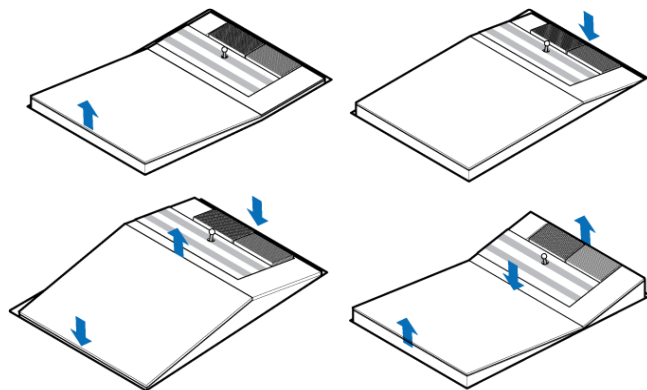
Key Features of TWOVISION Plus

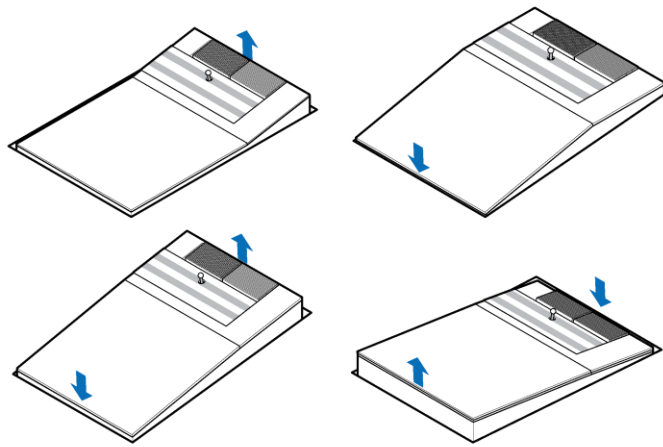
These features are unique to the TWOVISION Plus Simulator:

- The moving Dual Plate creates 14 different undulation positions to simulate the real shot on the golf course.
- The LED Putting Guide guides the hole direction and the putting direction with a red LED light to assist putting.
- The Dual Rough and Dual Bunker mats allow you to enjoy a realistic game that accurately simulates a course environment.
- TWOVISION Plus senses not only ball contact, but also the divot area providing more accurate hitting feedback.

Dual Plate

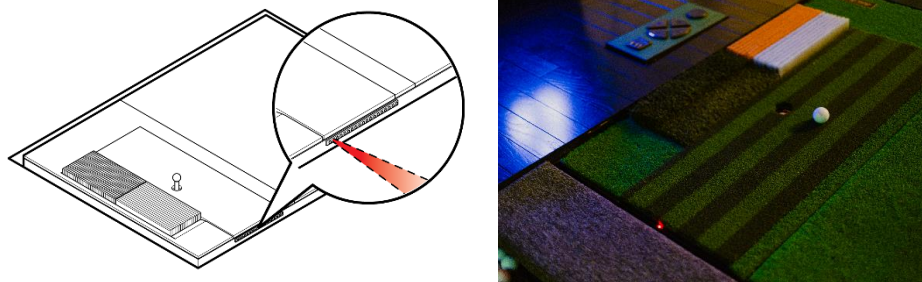
The Dual Plate is a swing plate that moves 14 different directions to simulate accurate undulation on the golf course. The Dual Plate has two moving sections that allow each plate to rise or fall independently, creating 14 types of undulation including the examples below:





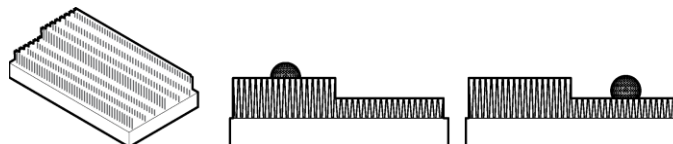
LED Putting Guide

The LED Putting Guide is a small red light attached to the front of the Dual Plate. It operates when the player is on the green and the ball is on the Fairway Mat. This light appears to help read the slope of the green. When the player is ready to complete the stroke, simply aim at the red LED light to account for the break. When the putt is straight and has no undulation, the light will not appear.



The LED Putting Guide does not display in the Driving Range. The LED Putting Guide can be turned off.

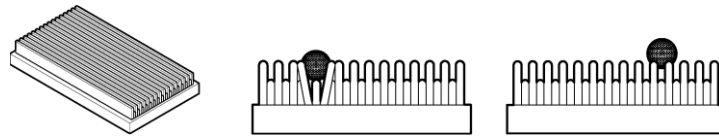
Dual Rough Mat



The Dual Rough Mat of TWOVISION Plus consists of long grass and shorter grass. The long grass provides the feeling of dense rough while the short grass gives the feeling of coarse rough, so that

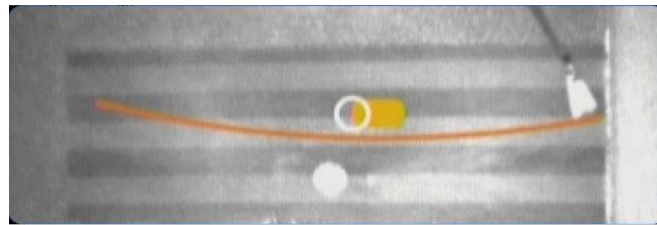
users can experience a more realistic game. The system will instruct you when to use which rough surface. If the player does not use the appropriate surface, a distance penalty will occur.

Dual Bunker Mat



The Dual Bunker Mat of TWOVISION Plus consists of interwoven long and short strands. Users can create the feeling of shallow and deep bunkers by placing a ball on the appropriate section. For example, the short interwoven strands simulate a fairway bunker and the long interwoven strands simulate a greenside bunker. The system will instruct you when to use which bunker surface. If the player does not use the appropriate surface, a distance penalty will occur.

Divot Sensing



The TWOVISION Plus T4 Sensors installed in the ceiling and the kiosk detect the moment the golf club hits the ball from both above and in front of the player across the entire Fairway Mat. The player will be able to see the swing path at impact and the clubface position through the ball to show realistic divots.

System Components

TWOVISION Plus provides an indoor golf experience simulating a true round of golf. Players may choose from over 200 world famous golf courses and sharpen their skills on the Driving Range, Approach Practice, and Putting Arena.

**Note**

The diagram shows an example for both right-handed and left-handed players.

Actual configuration may be different depending on installation options.

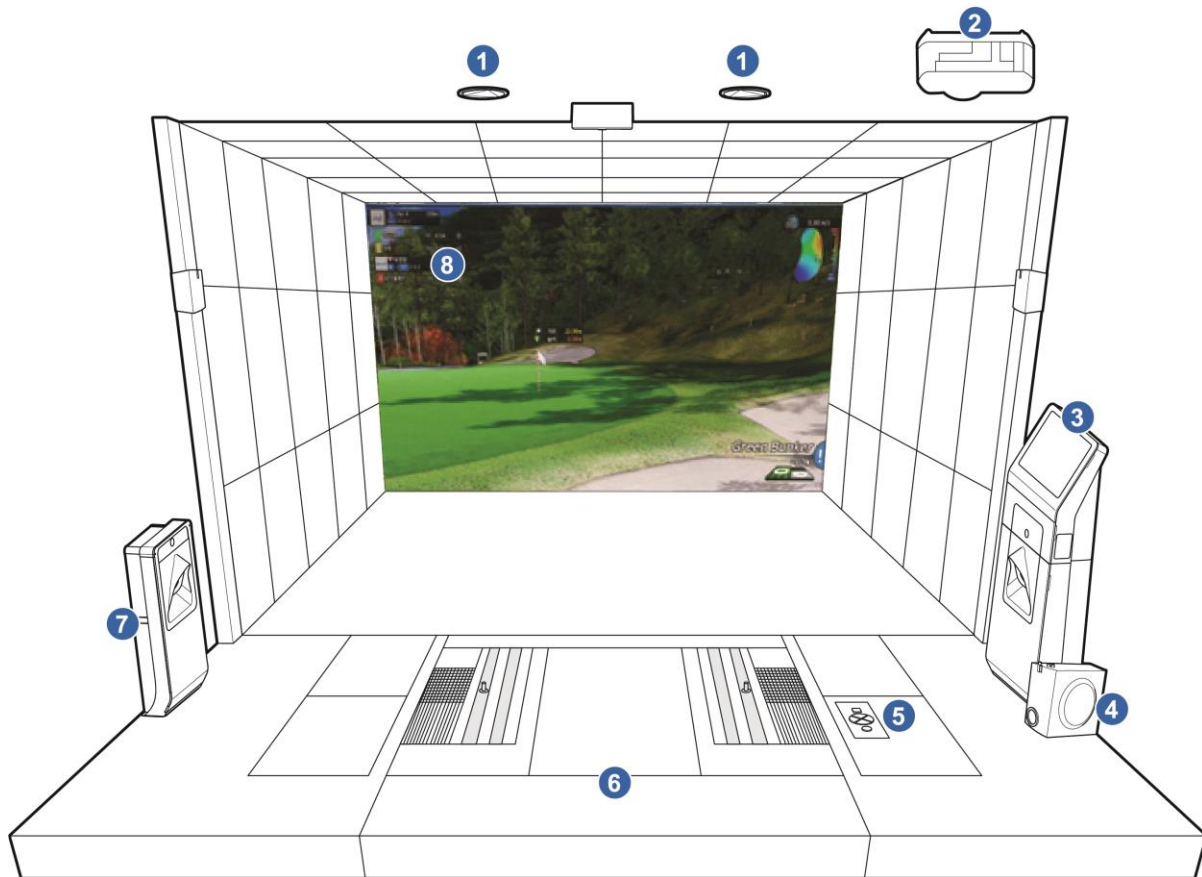
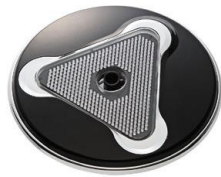


Diagram Configuration Key

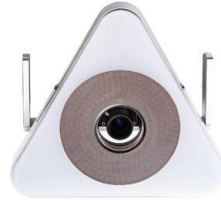
Number	Device	Number	Device
1	TWOVISION Plus T4 Sensor	5	Keypad
2	Projector	6	Dual Plate
3	Right-Handed Kiosk	7	Left-Handed Kiosk
4	2.0 Channel Speaker	8	Screen

TWOVISION Plus T4 Sensor

T4 Sensors installed in the ceiling and the kiosk detect the moment the golf club hits the ball from both above and in front of the player.



Ceiling Sensor



Kiosk Sensor

Projector

The projector beams the TWOVISION Plus user interface, including field images, onto the screen.



Note

The projector maker and model is subject to change according to GOLFZON's internal policy.

Kiosk

The kiosk consists of the following elements:



Number	Device	Function
1	Touch Screen	Operate TWOVISION Plus by using the touch screen.
2	Power Button	Press the power button on the left side to turn the system on.
3	Card Reader	Tap your membership card on the card reader to login to the TWOVISION Plus.
4	Swing Motion Camera	The camera records the moment of the swing and plays it back for the player to view.
5	TWOVISION Plus Sensor	The sensor captures the movement of the club in the impact zone.



Touch Screen



Swing Motion Camera



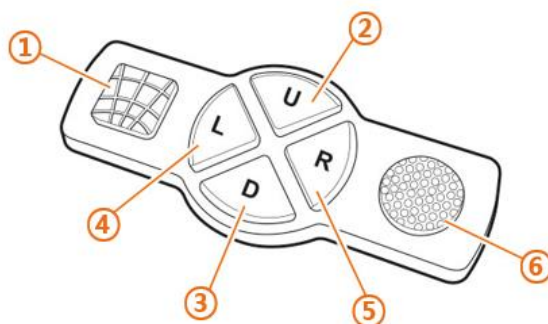
TWOVISION Plus Kiosk Sensor

2.0 Channel Speaker

TWOVISION Plus comes with a BRITZ hi-fi speaker system.

Keypad

The keypad is installed on the floor in front of the Dual Plate. The player can adjust aiming or change the club using the keypad.



Number	Device	Function
1	Grid Button	This button allows the grid to appear or disappear when putting. The grid is to assist the player when reading the slope of the green. <i>This feature may not be available depending on the game options.</i>
2	Up Button	This button has two features: 1) it allows the tee to raise 5 millimeters each time, 2) increase the club selection i.e. change the club from an 8 iron to a 7 iron.
3	Down Button	This button has two features: 1) it allows the tee to lower 5 millimeters each time, 2) decrease the club selection i.e. change the club from a 9 iron to a pitching wedge.
4	Left Button	This button allows the player to adjust the aim further to the left.
5	Right Button	This button allows the player to adjust the aim further to the right.
6	Tee-Up Button	This button allows the player the ability to call another ball using the Auto Tee-Up feature.

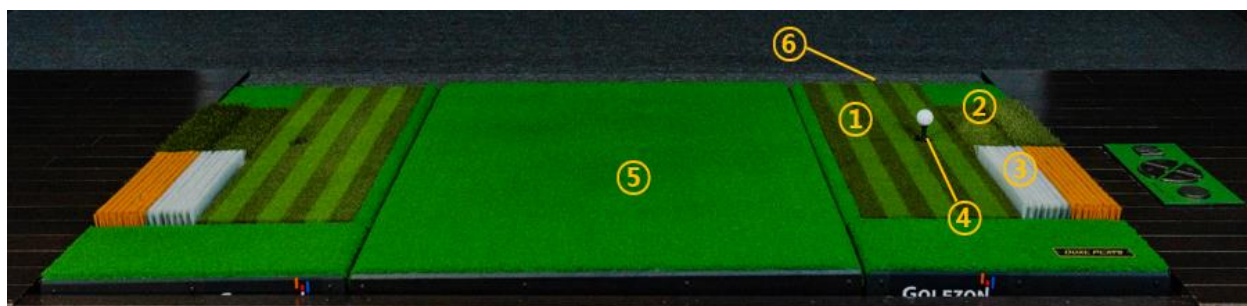


Caution

Do not use broken or worn golf balls. The screen can be damaged.

Dual Plate

The Dual Plate consists of the following elements:





Fairway Mat



Dual Rough Mat



Dual Bunker Mat

Number	Device	Functionality
1	Fairway Mat	When the ball is in the fairway or on the green, place the ball on the Fairway Mat. The Fairway Mat has a patented stripe design to help align the ball when putting.
2	Dual Rough Mat	There are two different thickness of rough, regular and heavy. The system will instruct you when to place the ball on the rough mat.
3	Dual Bunker Mat	There are two different kinds of sand, bunker and fairway. The system will instruct you when to place the ball on the bunker mat.
4	Auto Tee-Up	For each shot, the rubber tee rises with a ball ready to hit. When the ball is removed from the rubber tee, it automatically lowers.
5	Stance Mat	This mat is designed with ample space for the player to set their posture.
6	LED Putting Guide	The red LED light appears when on the green to help the player read the slope of the putt. The LED light shows the player where to aim to account for the slope.



Caution

Do not jump on the Dual Plate. Doing so may cause damage to it.

Left-handed Kiosk

The Left-handed kiosk (if installed) has a swing motion camera that records the moment of the swing and plays it back for the player to view. Also, the T4 sensor captures the movement of the club in the impact zone.



Screen

The screen is customizable depending on the space availability. It consists of two sheets attached to each other with Velcro.



Caution

Avoid using broken, worn, or dirty golf balls to maintain durability and extend the life of the screen.

GOLFZON Account

User login is required to use TWOVISION Plus. To create a GOLFZON account, visit

<http://www.global.golfzon.com>. Benefits for GOLFZON members are as follows:

- Join GOLFZON tournaments to compete with other players all over the world.
- View your game records and statistics on the web or mobile app.
- View your recorded swing motions on the web or mobile app.

You can login as a guest without a GOLFZON account, but cannot use the features mentioned above.

Safety



Warning

Failure to observe the precautions described in this section can cause injury or property damage.

Observe the following precautions:

- Do not disassemble the TWOVISION Plus.
- Do not insert foreign objects into any component of the TWOVISION Plus.

Grounding



Warning

Never remove or damage the grounding. The warranty does not apply to failures that are caused by removal or damage of the grounding. Golfzon is not liable for any accident caused by improper grounding.

Grounding is the most important safety precaution. If grounding is not properly completed, an electric shock or malfunction of the product may occur. If an overload or other serious problems occur, the electrical circuit breaker may not operate properly and could cause a fire. To prevent accidents and product damage, please make sure the TWOVISION Plus is properly grounded during installation.

Power



Warning

Do not modify electrical installations. The warranty does not apply to failures that are caused by improper electrical installations. Golfzon is not liable for any accident caused by improper electrical installations.

To prevent fire or electric shock, observe the following precautions:

- Use the power rating that meets the specifications of the country where the system is installed.
- An individual circuit breaker must be installed for each piece of equipment. A circuit breaker

of 20 Amp or higher per device must be used.

- The maximum power used per installation is approximately 2000 Watts. Maintain and manage electrical installations considering the power consumption of other electrical devices including air conditioner.
- Do not use a damaged plug and a loose socket.
- If the power cable or any wire is damaged, replace it with a new one immediately.
- If water or other liquids are spilled onto the TWOVISION Plus installation, immediately unplug the power, and contact your local Golfzon authorized service provider for inspection.

Management



Warning

Do not change the internal components of TWOVISION Plus. The warranty does not apply to the performance degradation or failure caused by internal changes.

To prevent malfunction and failure of the product, observe the following precautions:

- The height from the swing plate to the ceiling must be 9'2" – 10'6" (2800 – 3200 mm).
- Keep the humidity below 95% relative humidity.
- Accumulated dust can cause static electricity buildup and discharge. Keep system components clean with routine dust removal and cleaning.
- Keep the room temperature within 32-104°F (0 – 40 °C).
- A maximum number of five devices connected to the internet (based on 100 Mbps).
- Block direct sunlight to the components.
- Do not look directly into the projector beam. Be careful not to be exposed to the projector light, especially if you have aphasia, albinism, or cataracts.

Use

Be careful to observe the following to avoid injury when using TWOVISION Plus:

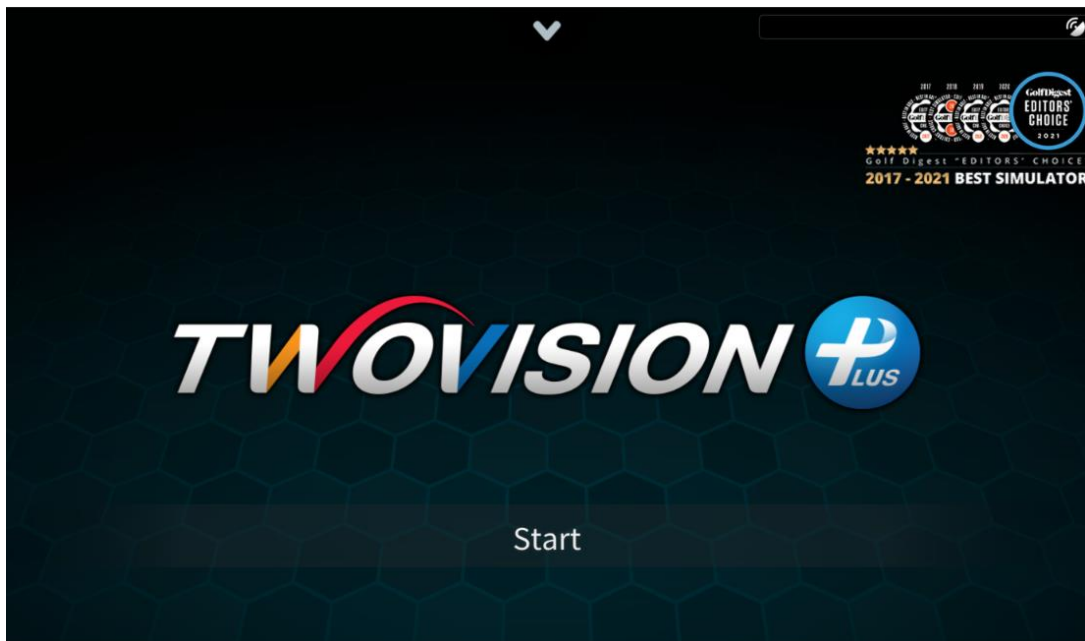
- We recommend a proper warm-up before you swing.
- Before you swing, make sure there are no other people or objects around you.

- Be careful not to hit the back edge of the swing plate as you swing.
- Be aware that the swing plate sometimes moves before the next shot and may cause loss of balance when you are on the swing plate.

Preparing to Play


Starting TWOVISION Plus





1. Turn on the TWOVISION Plus by pressing the power button on the left side of the kiosk.
2. Double-touch the Golfzon Vision2 Launcher icon on the desktop.
3. The User Account Control window appears, “Do you want to allow this app from an unknown publisher to make changes to your device?” Touch [Yes].
4. Wait for the software update to complete, and then click [Start] to launch TWOVISION Plus.
5. Click [Start] on the home screen.



Shutting down TWOVISION Plus

Properly shut down the TWOVISION Plus system as follows:

1. During or at the end of play touch the  button at the top right of the screen to return to the Start screen.

2. On the Driving Range touch the  button at the top right of the screen to return to the Player settings page with the Player List, then touch the [Previous] button (left arrow) to return to the Start screen.
3. Once on the Start screen, touch  button at the top of the TWOVISION Plus Start screen, then touch [Quit].
4. On the Windows screen at the lower left, touch the [Start]  button, touch the [Power]  button, and touch [Shut down].

Begin preparing a game on the left sidebar as follows:

1. Player Settings
2. Play Mode Selection
3. CC Selection
4. Round Setting

Use the [Previous] and [Next] buttons (left and right arrows) to navigate to the previous or next step.



Note

You can use the Driving Range feature for practice by touching the [D. Range] button at the bottom of the left-sidebar anytime before starting a game. See [Driving Range](#) for details.

Step 1: Player settings

Up to 6 players can join in to play in a game.



Player list:

There are three methods to login.

- To login with your Golfzon Membership Card, tap your card on the reader on the right side of the kiosk (prior to touching [Login]).
- If you have a Golfzon account (but don't have your card), click [Login] and enter your ID and password into the dialog box.
- If you do not have a Golfzon account, click [Guest Login]. A player entry is added as Player(#). Touch the player name to edit it and type a name into the dialog box.

To delete a player, touch [Logout].

Settings

There are two ways to set Difficulty and Tee Box settings: 1) All Players or 2) Individually.

1. All Players:


- At the top of the right side bar.
- Choose a Difficulty for all players (Beginner, Amateur, Pro, or TOUR).
- Choose a Tee box for all players (Red, Yellow, White, Blue, or Black).

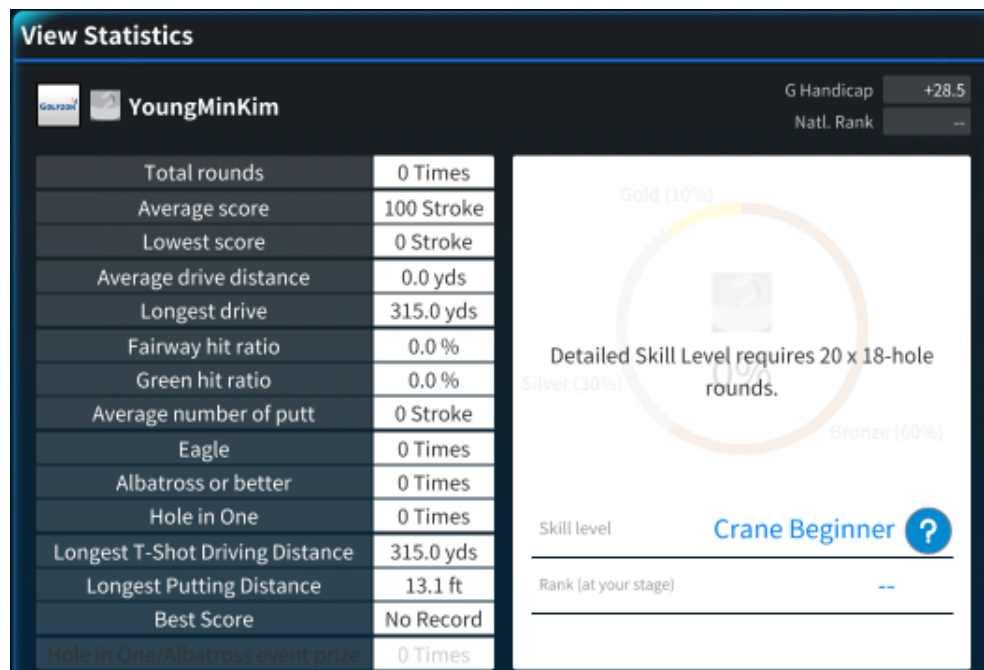
2. Individually:

- In the middle of the right sidebar.

Difficulty	Select the player's skill level: Beginner, Amateur, Pro, or TOUR
Tee Height	Choose a player's tee height for the entire round from 1" to 2.4".
Tee box	Choose an appropriate hole length distance for the player's Tee box. TWOVISION Plus has seven sets of tees: Junior B, Junior A, Red, Yellow, White, Blue, and Black. Shortest length holes are Junior B; longest length holes are Black.
Right/Left	Select either right-handed or left-handed for the player.

View player record

A GOLFZON user can view their game records, including the number of rounds that they have played. Touch the  button next to the nickname. View Statistics appears showing the total number of rounds, average score, average driving distance, and stats.



Click [Next] to go to Play Mode Selection.




Step 2: Play Mode Selection

Choose one of seven play modes: Stroke, Tournament, Scramble, Chip & Putt, Foursome Stroke, Network Play, or Match.



Select the Play Mode you want and touch [\[Next\]](#).

Game mode	Description
[Stroke]	The stroke mode is the most common game mode. The player with the lowest number of strokes wins the round.
[Tournament]	<p>You can participate in various types of tournaments that are held by an individual or a group. The tournaments are held for several days or more depending on the conditions and rules set by the tournament holders. The holders can determine the following:</p> <ul style="list-style-type: none">• Tournament period• Qualification for participation• Golf course

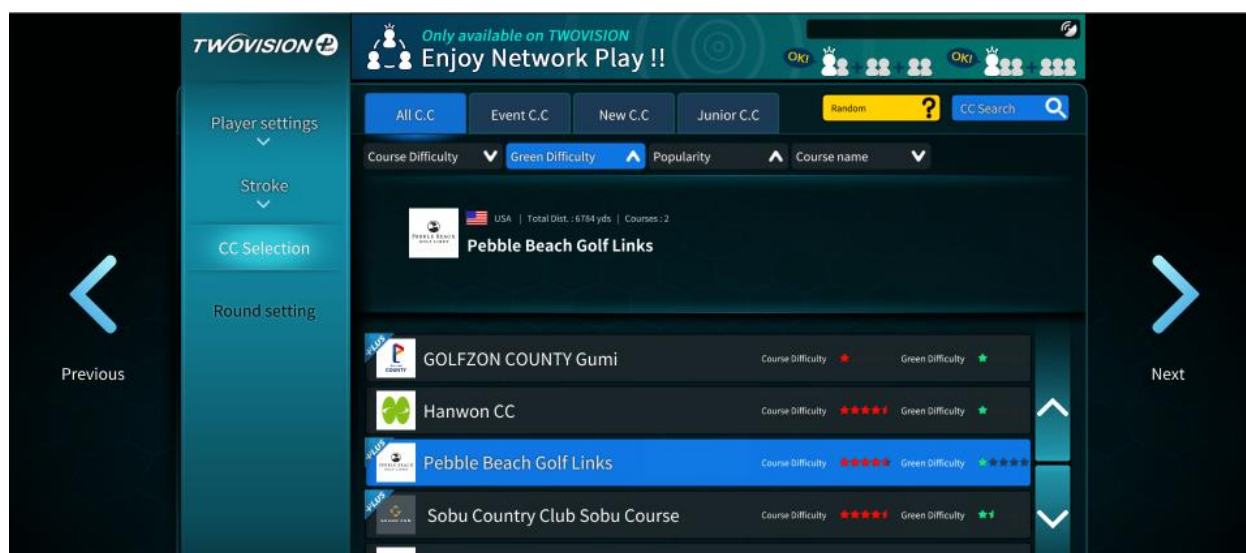
Game mode	Description
	<ul style="list-style-type: none"> Tournament conditions including mulligan use <p>To open a tournament, use the Golfzon app or visit our website.</p> <div>  <p>Note The use of game items such as course manager may not be permitted depending on the tournament holder's settings.</p> </div>
[Scramble]	<p>Scramble is a three to six player game. Each golfer hits a tee shot. The best ball is automatically selected by calculating the remaining distance to the green and ball position, then each team member hits from that spot. (However, players may also choose to play from their own spot.) Continue hitting the best shot until each team holes out.</p> <div>  <p>Notes You first choose your teams when Scramble is selected. Any combination of teams is possible. You also choose Best Shot or Best Ball and Stroke play or Match play.</p> </div>
[Chip and putt]	Every hole is a par 3. The ball must be holed out.
[Foursome Stroke]	<p>Four players play two against two in an alternate shot competition.</p> <div>  <p>Note You first choose your two-person teams when Foursome Stroke is selected.</p> </div>
[Network Play]	<p>Golfzon members can enjoy rounds with your acquaintances that are using other TWOVISION Plus systems in the same or different places. Network play is stroke play in which up to 6 players can connect to enjoy rounds in real time at different bays or venues at the same time. You can open a room by clicking Create room or you can enter a room that has been created to play.</p>
[Match]	<p>Two players compete against each other. The player with lowest number of strokes wins the hole. The player who wins the most holes wins the round.</p>

Step 3: CC Selection



Note

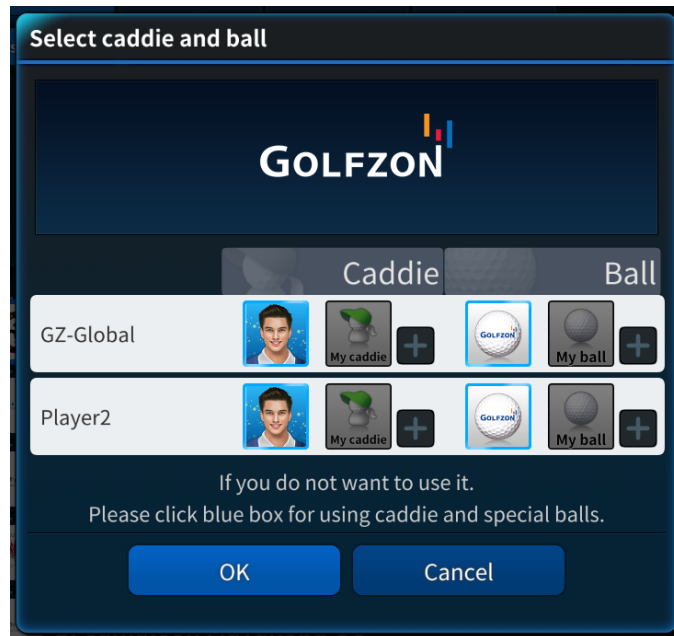
This step may be omitted, depending on the Play Mode you selected.



Use the options below and scroll (using the up or down arrows) to select the golf course you want. Then touch [\[Next\]](#).

Touch	Description
[All CC]	To show all courses.
[Event CC]	To show only courses where events are held.
[New CC]	To show recently added courses.
[Junior CC]	Find courses specifically for junior golfers.
[Random]	Selects a course at random.
[CC Search]	To search for a specific golf course.
[Course difficulty]	The course list is arranged in ascending or descending order by overall difficulty.
[Green difficulty]	The course list is arranged in ascending or descending order by green difficulty.
[Popularity]	The course list is arranged in ascending or descending order by popularity.
[Course name]	The course list is arranged alphabetically in ascending or descending order.

In Stroke mode and Match after you choose a course, select a Caddie and Ball and touch [\[OK\]](#).

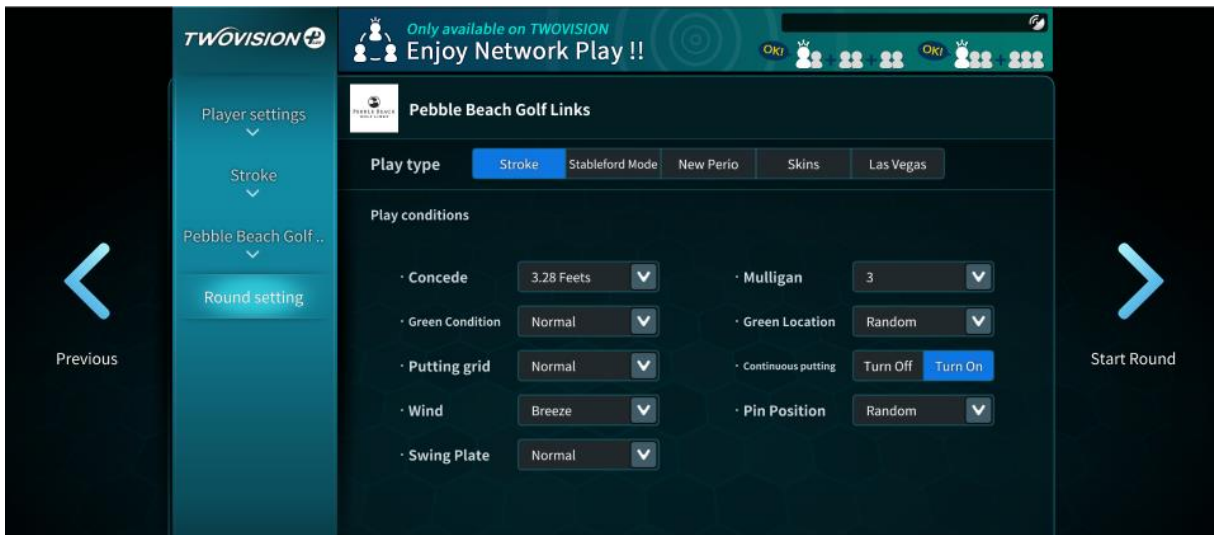


Step 4: Select round settings



Note

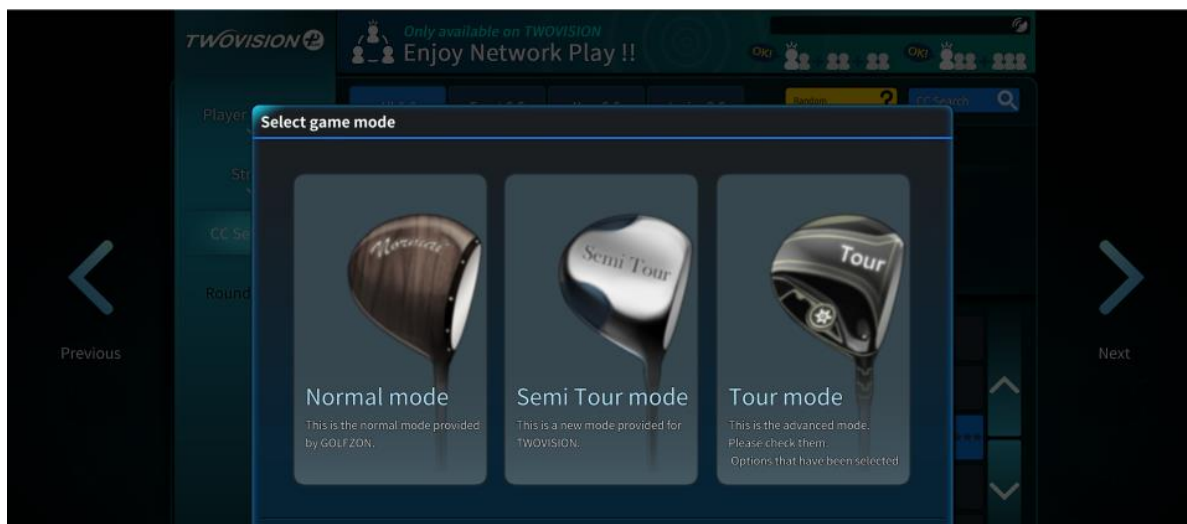
This step may be omitted, depending on the Play Mode you selected.



In Stroke mode and Match, you can set the play conditions using a variety of options. In Tournament mode, the game holder sets the game conditions in advance. In other game modes, the options you

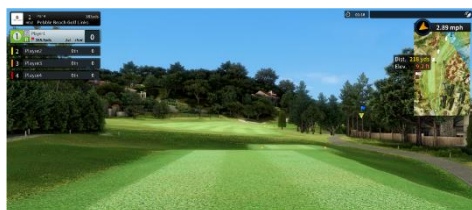
can set are limited.

If Stroke mode is selected, the following window appears.

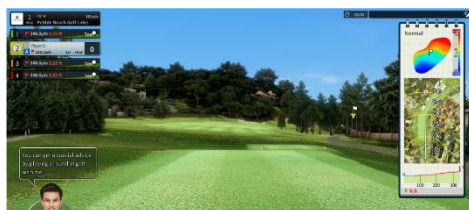


Each Stroke mode has the following characteristics.

Mode	Description
Normal	Normal mode lets you enjoy your golf game as if you are on a real course.
Semi-tour	Semi-tour mode introduces some challenges in the field that requires you think strategy how you want to attack the green. There are three levels of penalties, if you are in the rough or bunker.
Tour	Tour Mode is the most challenging, just as you would find on tour championship courses. The difficulty level is increased where four levels of penalties are given from the rough and bunkers in addition to no grid information on the putting green.



Normal



Semi-tour



Tour

The difference between each mode is shown in the table below. If you hit a ball off the fairway mat instead of the rough or bunker mat as the ball lies in the rough or bunker, the ball speed is reduced by a certain rate.

	Normal Mode	Semi Tour Mode	Tour Mode
Mini Map	Available	None	None
Yardage Book	None	Available	Available
Grid on Green	Available	Available	None

Choose Play type to select a scoring method:

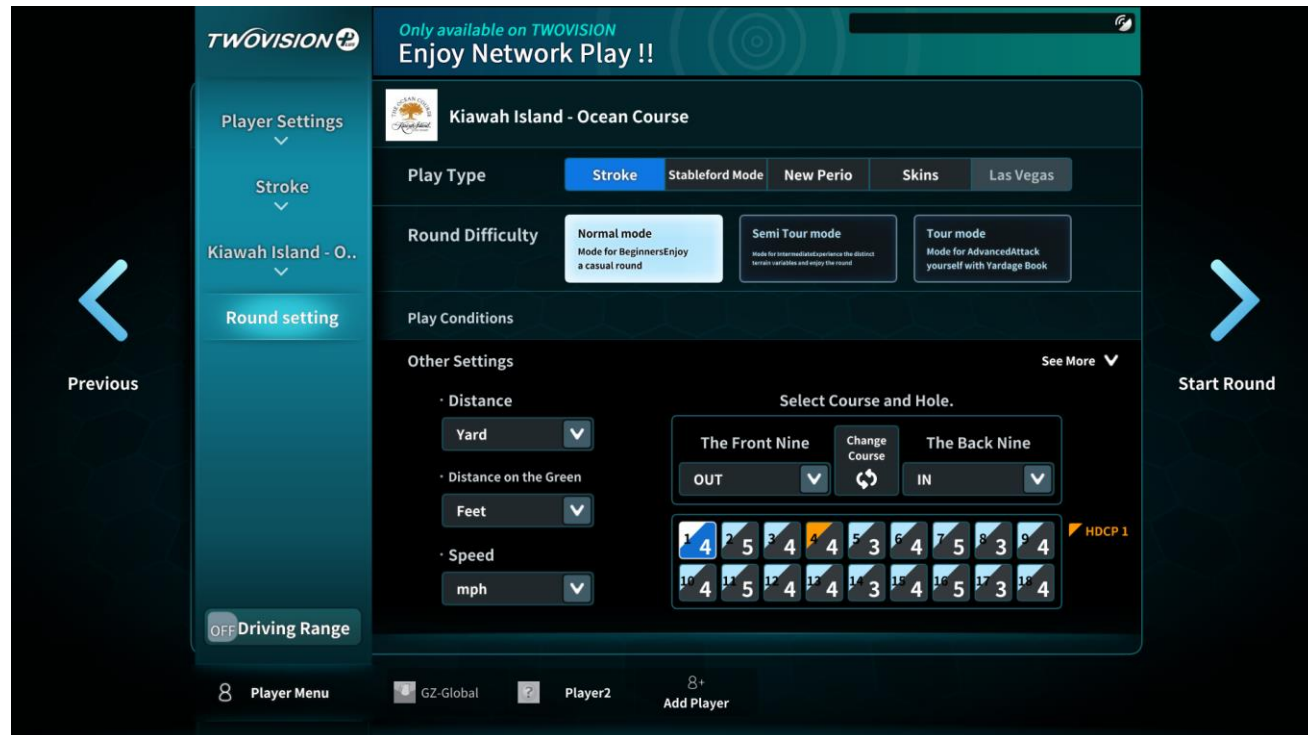
[Stroke]	The person who has the fewest cumulative strokes in a round is the winner.
[Stableford Mode]	Individual points are accrued per strokes played per hole. Double Bogey = 0, Bogey = 1, Par = 2, Birdie = 3, Eagle = 4, Albatross = 5. The person who has the highest cumulative score in a round is the winner.
[New Perio]	With 6 random holes excluded, each player's handicap is determined based on the score of the remaining 12 holes in a round. The winner is determined after the handicaps are applied to the scores.
[Skins]	A winner is determined for each hole. Each hole is given a specific value. The hole's winner takes the hole's value as their score. If there is a tie, the score is carried over to the next hole.
[Las Vegas]	Four players play against one another in two teams. Teams are composed of different players for each hole. A winning team is determined for each hole. The individual player with most team win wins the round.

To set the Play conditions touch the down arrow as follows.

Options	Description
[Concede]	On the green, the ball is considered to have entered the hole when it lands within a certain distance from the hole. This is called "Concede". Specify a concede distance from 0 to 16.4 feet.
[Green condition]	Choose a severity level of undulation and speed for the green: Normal,

Options	Description
	Faster, or Fastest.
[Putting grid]	Choose the thickness of the grid lines on the screen: Normal or Wide.
[Wind]	Select wind speed: Breeze, Normal, or Strong.
[Swing Plate]	Specify the tilt of the swing plate: Normal, Difficult, or Flat.
[Mulligan]	A redo of the previous shot without penalty is called a mulligan. You may use one mulligan per hole. Specify the number of mulligans to be allowed in a round: None, 1, 2, or 3.
[Green Location]	Two greens are available per hole; one on the left and the other on the right. Choose: Random, Left-side, or Right-side.
[Continuous Putting]	When all players' balls are on the green, players can continue to putt until the ball enters the hole. The default setting is on.
[Pin position]	Specify the hole location on the green: Back, Right, Front, Left, or Random.

Select Other Settings as follows:



[Distance]	Select unit measurements in Yards or Meters.
[Distance on the Green]	Select unit measurements in Meters, Feet, or Yards.

[Speed]	Select unit measurements in m/s, km/h, or mph.
[Select course and hole]	Select which hole from which you want start a game. You can also select to exclude the front or back nine holes.

To finish, touch [\[Start Round\]](#). The game begins.

Play a game

When the game starts, follow the virtual caddie's audio guidance to play the game. The general rules for the order of play are as follows:

- On the first hole, tee shots are in the order in which the players appear in the list.
- Starting with the second shot, a player takes a shot in the order of furthest distance from the ball to the hole.
- On the green with Continuous putting selected, the player keeps putting until the ball enters the hole.
- Tee shots from the second hole and on are in the order of lowest player score from the previous hole.



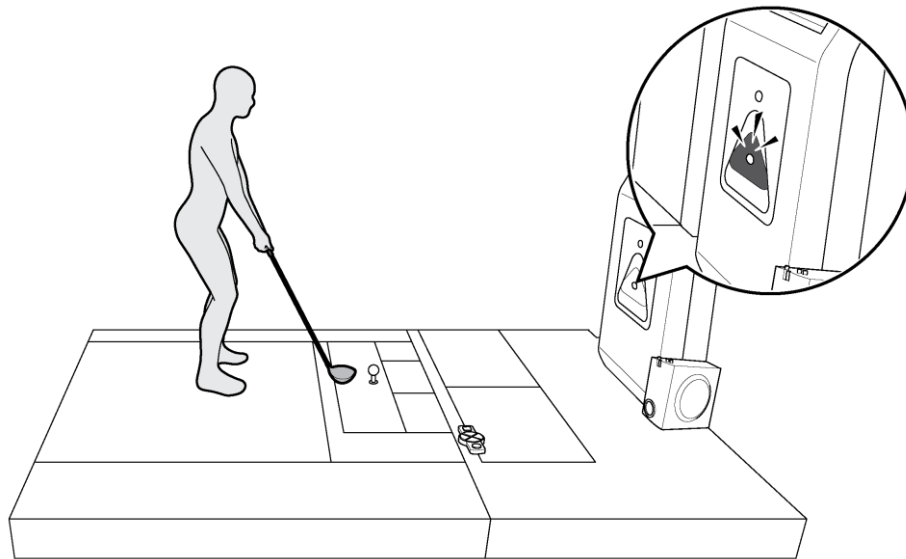
Warning

Make sure other people are far enough away from you before you swing. Be aware that the swing plate sometimes moves before the next shot and may cause loss of balance when you are on the swing plate. It is not recommended for more than two people to be on the swing plate.

Ready position

Before you hit the ball, take a ready position in the following way:

- Bring the club head close to the ball.
- TWOVISION Plus has three ways to alert you when the system is ready for you to hit.
 1. You hear the voice prompt "Ready".
 2. The sensor of the kiosk lights up.
 3. The lower-right corner of the screen shows a blue circle around the ball.



Screen images

The screen images show four types of information for the player along with the terrain of the current location.



The following information is displayed in each corner of the screen:

Number	Description
1	The upper-left corner of the screen shows the par, the length of the hole, the players' current shot and score, the distance to the hole, the elevation to the green, and the position for the ball on the mat surface.

2	A hole map is displayed in the upper-right corner of the screen. The wind strength and direction (blue sweeping line), the distance from the ball to the target point, and the distance from the target point to the hole are displayed together. When near the green, an image with the green contours appears.
3	A virtual caddie appears in the lower-left corner of the screen to guide you to prepare the shot.
4	The mat image displayed in the lower-right corner of the screen indicates on which mat surface the ball should be played and shows a blue circle around the ball when ready to hit.

Player functions

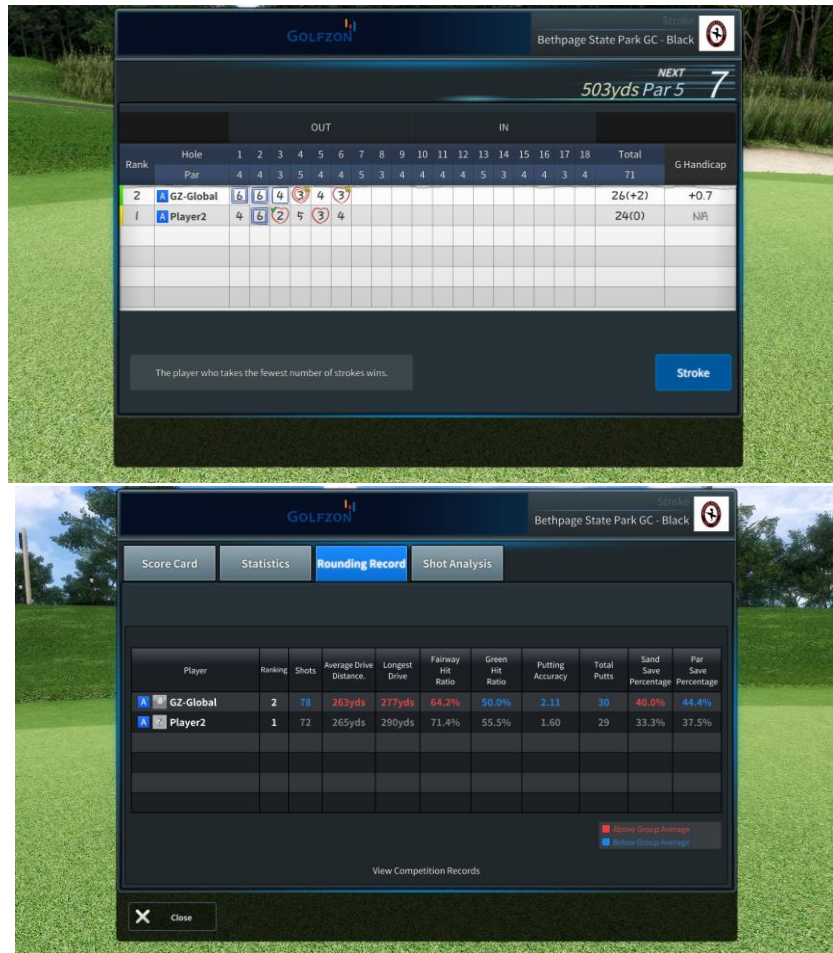
Players may use a variety of functions during the game. Available functions vary depending on the game mode, game conditions, and ball position. Navigate through the player features using the arrow buttons.



Number	Function	Number	Function
1	Change club	5	Use a Mulligan
2	Move the tee position to the left or right using the arrow buttons	6	Pass turn to the next player
3	Adjust sightline button	7	Use Caddie Plus, available from 2M to 30M to the hole
4	Adjust tee height button	8	Listen to the voice again

Function	Description
Continue	Continuous putting.
View/Hide	View or hide the putting grid.
View Target	View the target spot from the ball's viewpoint.
Location	View from behind the ball to the green.
View Green Lie	Show contours on the green.
Ground View	Look at the ground at knee height.
View Green	Hole flyover from tee to green.
Penalty Drop	When a player drops the ball from the woods or a bunker, the ball is in play with a one-stroke penalty.
Concede	Concede the hole. Players can use this when their balls are on the green, regardless of the distance from the ball to the hole. Important to note that your opponent wins the hole if you concede.
View Score	View players' scores. See [View Score]
My Swing	Replays video of the player's swing. See [My Swing]
View Swing	Compares videos of the player's previous swings.
View Current	View current rankings of the participants in the tournament.
	Note This function is available only in tournament mode.
Add/Delete Player	Add new or delete players.
Skip the Hole	Finish the current hole and move on to the next hole. Skipped holes are excluded from the total par.
Caddie voice	Turn off or on the Caddie voice and LED Putting Guide.
Right or left hand	Switch between right-handed or left-handed swing positions.
Change view	Adjust the viewing angle of the swing motion camera.

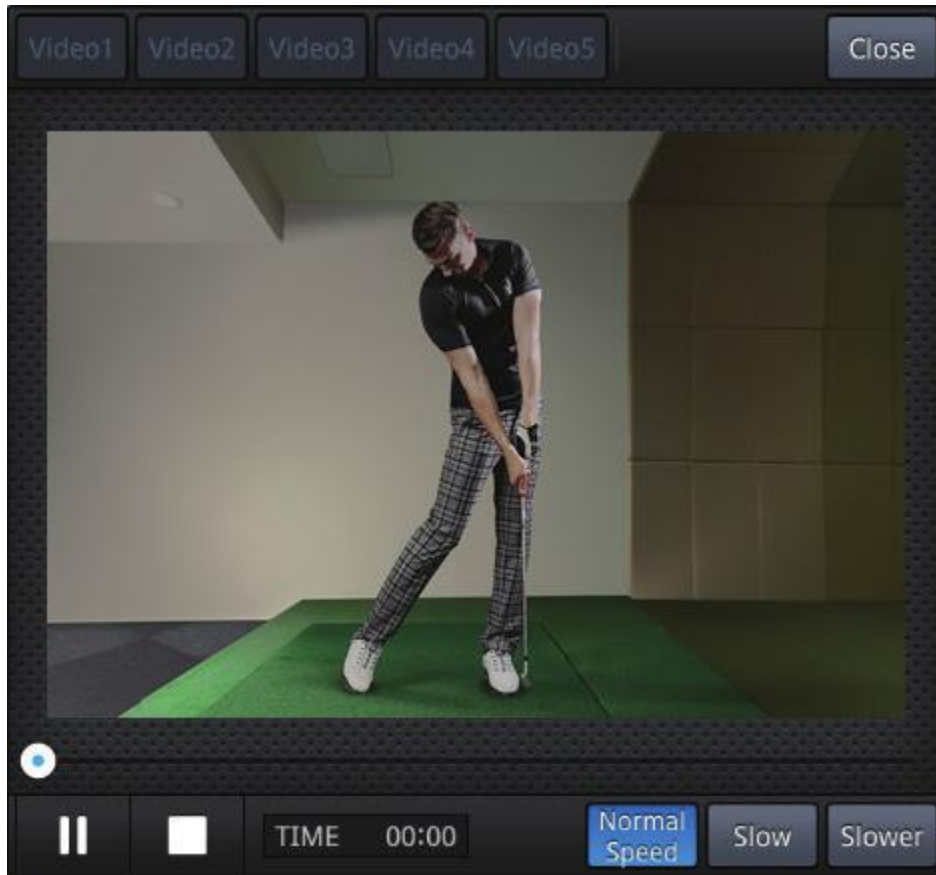
View Score



To view players' scores during the game, touch [View Score]. You see scores of each player as well as detailed statistics and analysis about their play, such as average drive distance and ball speed.


My Swing

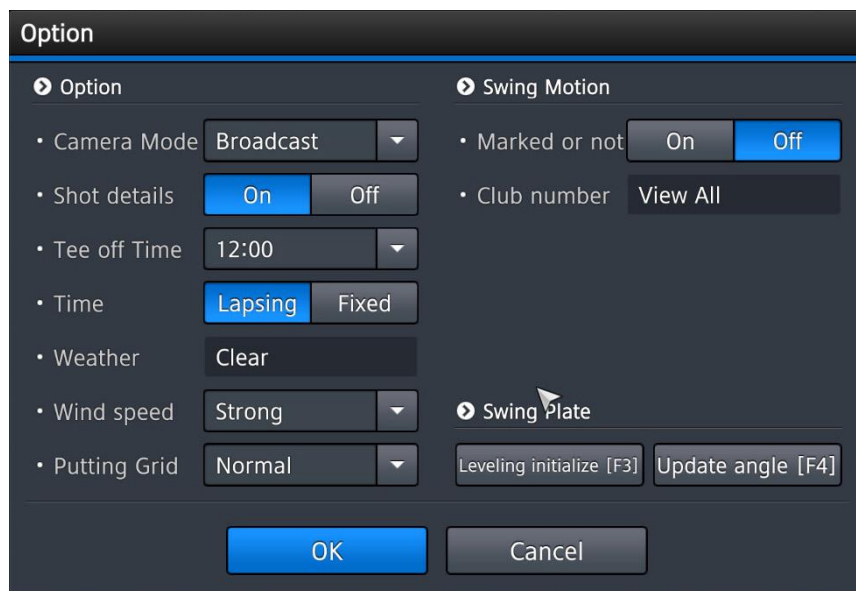
You can view the five most recent swings.



You can view the most recent five swings. Select one of them by clicking the corresponding numbered button. Click [Slow] or [Slower] to play the video in slow motion.

Changing Game Options

To change some of the game options, touch the  button at the upper right.



Option


- Option
 - Camera Mode: Broadcast
 - Shot details: On / Off
 - Tee off Time: 12:00
 - Time: Lapsing / Fixed
 - Weather: Clear
 - Wind speed: Strong
 - Putting Grid: Normal
- Swing Motion
 - Marked or not: On / Off
 - Club number: View All
- Swing Plate
 - Leveling initialize [F3]
 - Update angle [F4]

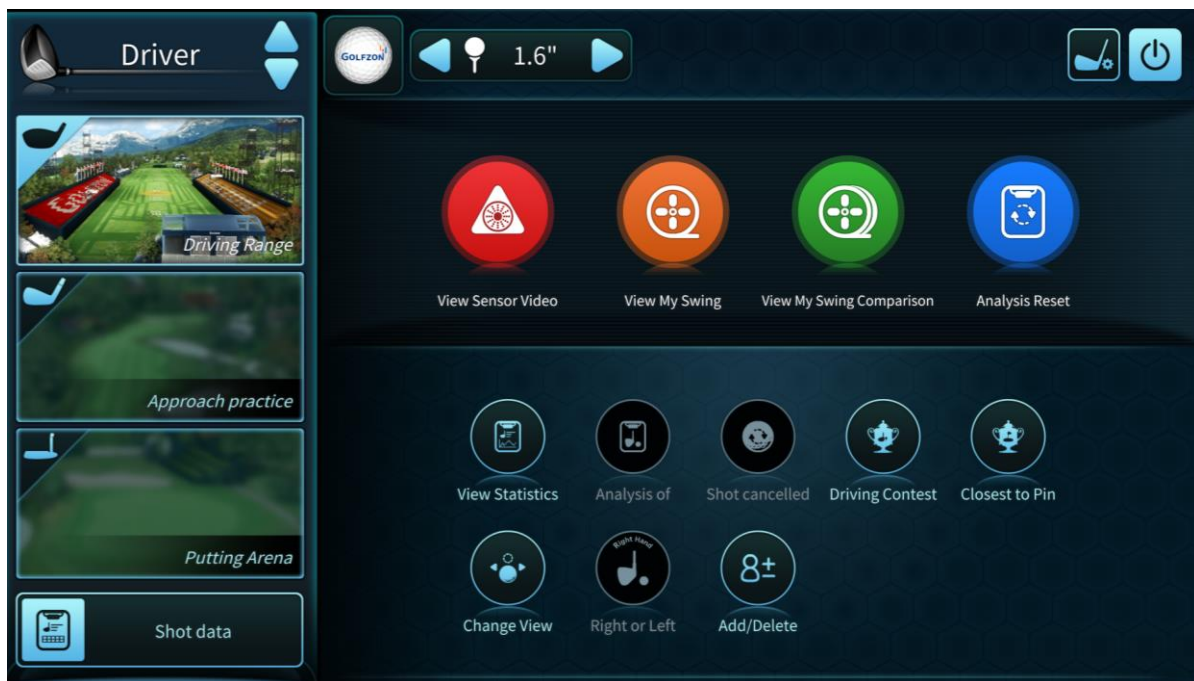
OK Cancel

Camera Mode	To track the ball in flight, set to [Broadcast]. Choose [Fixed] for the camera view to remain in place.
Wind speed	Choose wind speed: Light, Normal, or Strong.
Putting Grid	Choose the thickness of the grid on screen: Normal or Wide.
Mark On/Off	With this option on, swing motions are replayed immediately.
Club number	Choose your club for the upcoming shot.
Initialize Level	Set the Moving Swing Plate to flat.
Update S/P Slope	Set the Moving Swing Plate to the ball position on the course.


Driving Range

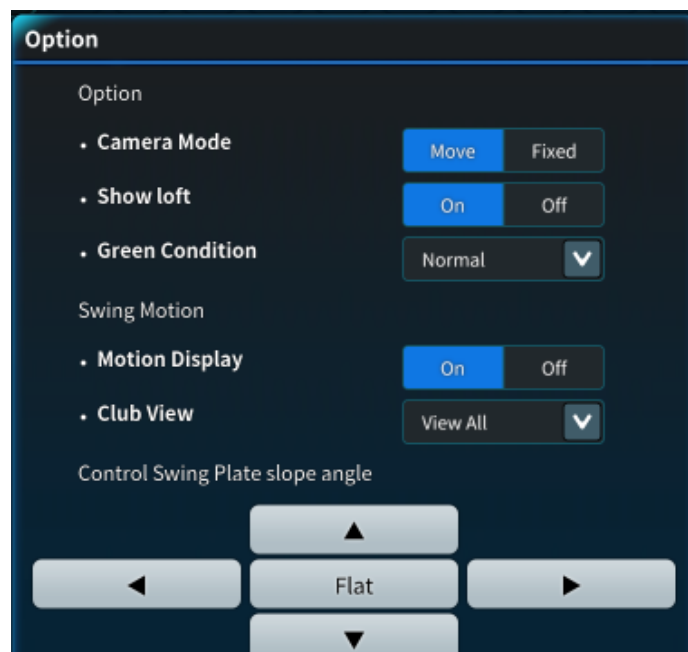
You can practice your swing on the Driving Range as follows:

1. Touch [\[D. Range\]](#) at the bottom of the left-sidebar at any time before you start a round.
1. You can choose the Driving Range, Approach practice, or the Putting Arena.
2. On the Driving Range and Approach practice, you may change clubs at the top of the left-sidebar by touching the up or down arrows.
3. On the Driving Range, you may adjust the height of the tee from 1" to 2.4".
4. At the lower left-sidebar, you can choose either [\[View Menu\]](#) or [\[Shot data\]](#).
5. [\[Shot data\]](#) including carry, distance, ball speed, and launch angle, etc. is displayed every time you take a shot.
6. [\[View Menu\]](#) will let you [\[View sensor video\]](#), [\[View My Swing\]](#), [\[view swing motion comparison\]](#), and [\[Analysis Reset\]](#).
7. You may also choose to [\[View statistics\]](#).
8. [\[Analysis of\]](#) will analyze your carry distance for each golf club. Your average carry distance data for each club will be applied to your play info. To change club selection touch [\[Next\]](#). Repeat the shot up to 10 times with each club. Based on this data, you will be offered a recommendation for the most suitable club for your next shot throughout a game. This feature is only available when logged in using a GOLFZON account.
9. [\[Shot cancelled\]](#) will remove your previous shot from the analysis of club data.
10. On the Driving Range, you may have a [\[Driving Contest\]](#) or play [\[Closest to pin\]](#).
11. Touch the  button at the top right of the screen at any time to return to the Player settings page with the Player List.



Setting Driving Range Options

To change the driving range options, touch the  button in the top right of the screen.

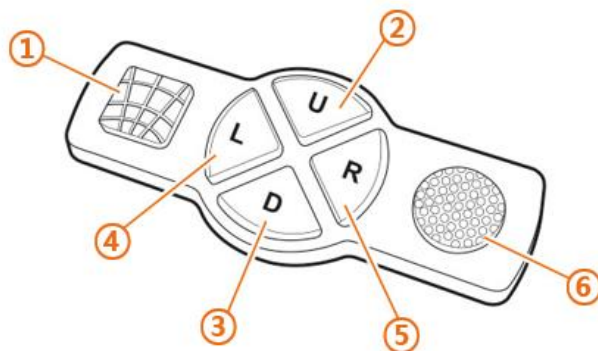


Options	Description
Camera Mode	[Move] will follow the ball in a bird's eye view. [Fixed] stays in the players view.
Show Loft	[On] shows the trajectory of the balls you hit earlier displayed on the screen. [Off] omits any trajectory.
Green Condition	Select the speed of the green: Normal, Faster, or Fastest.
Motion Display	[On] will replay your swing motion each time you hit the ball with the clubs set to the Club View option. [Off] omits replay.
Club View	Choose a category of golf club for immediate replay of swing motions.
Control Swing Plate slope angle	Tilt the Dual Swing Plate slope angle using the arrows to render an inclined surface or select [Flat] to remove any slope angle.

When finished selecting options, touch [OK].

Keypad

The keypad has additional functions in the Driving Range:



Number	Device	Function
1	Grid Button	The putting grid is not available on the Driving Range.
2	Up Button	Increases your club selection and distance. For example, change your club from an 8 iron to a 7 iron and the distance increases from 136 yards to 147 yards.
3	Down Button	Decreases your club selection and distance. For example, change your club from a 9 iron to a pitching wedge and the distance decreases from 125 yards to 114 yards.
4	Left Button	Switches between the Driving Range, Approach practice, or the Putting Arena.
5	Right Button	Switches between the Driving Range, Approach practice, or the Putting Arena.
6	Tee-Up Button	Calls up another ball using the Auto Tee-Up feature.



Caution

Do not use broken or worn golf balls. The screen can be damaged.

To exit the Driving Range touch the  button at the top right of the screen.

Administrator settings

You can do the following using the administrator menu:


- Set the default for the Game options.
- Set the default for the System options.
- Change the administrator password and situations to check the password.
- Hardware setup and test of each device.



Warning

[Hardware] in the administrator menu is for service technicians. Do not change hardware settings. TWOVISION Plus may not operate properly.

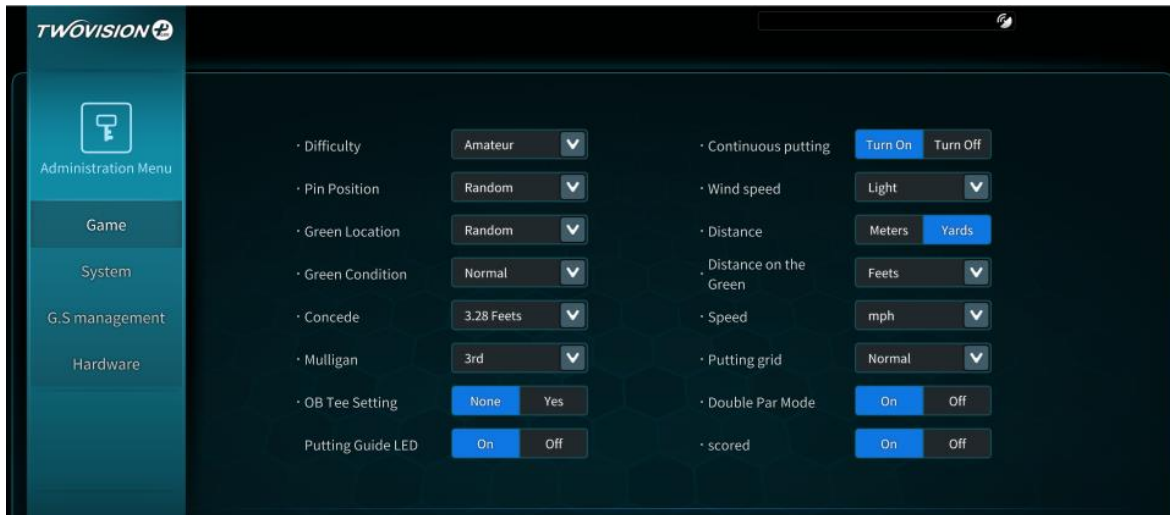
To change the administrator settings, use the following steps:

12. To enter the administrator screen, touch  button on the Start screen of TWOVISION Plus and then touch **[Administrator]**. The default password is 1234.
13. Type in the password and touch [Enter], then touch [OK].
14. Select a settings group on the left-sidebar that you want to change.
15. Select options, then touch **[Save]**.
16. To finish, touch **[Exit]**.

Default Game Options

To change the default Game options, follow the steps below:

17. Touch [\[Game\]](#).
18. Refer to the instructions below to set the options. To revert to all the previous settings, touch [\[Back\]](#).
19. To finish, touch [\[Save\]](#).



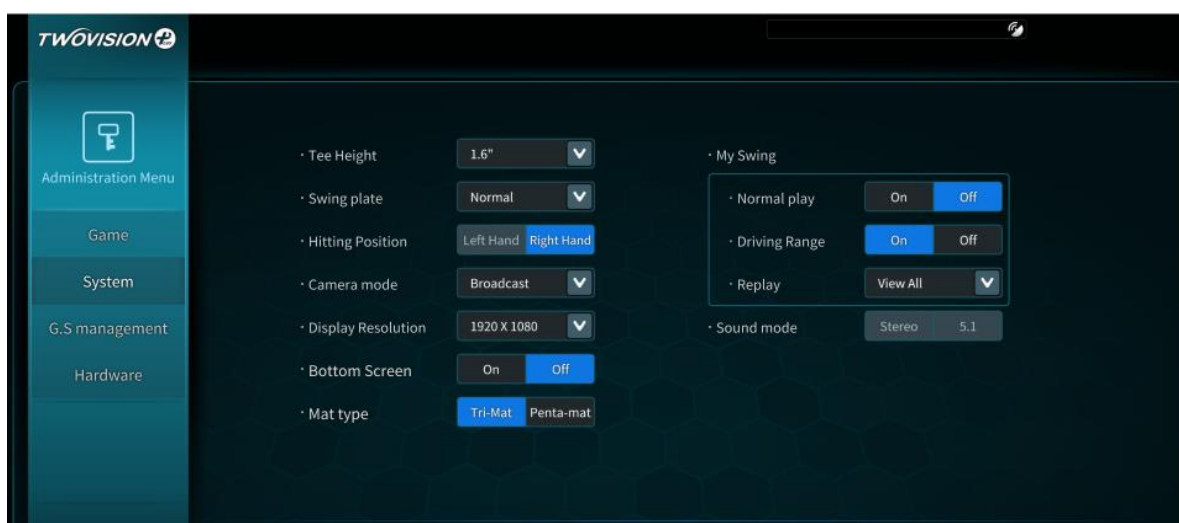
Options	Description
[Difficulty]	Set a player's skill level: Beginner, Amateur, Pro, or TOUR. The difficulty factors, including distance, vary by level.
[Pin position]	Choose Back, Right, Front, Left, or Random for the hole position on the green.
[Green Location]	Select which of the two greens you want to use: Left-side, Right-side, or Random.
[Green condition]	Select the speed of the green: Normal, Faster, or Fastest.
[Concede]	On the green, the ball is considered to have entered the hole when it lands within a certain distance from the hole. This is called "Concede". Specify a concede distance from 0 to 16.4 feet.
[Mulligan]	A redo of the previous shot without penalty is called a mulligan. You may use one mulligan per hole. Specify the number of mulligans to be allowed in a round: None, 1, 2, 3, 4, or 5.

Options	Description
[OB Tee settings]	If you select [None] , you hit the ball again from its original point when an Out of Bounds (OB) occurs. If you select [Yes] , you can hit the ball from the point where the OB occurs.
[Putting guide LED]	Turn on or off the LED putting guide.
[Continuous Putting]	Turn on or off Continuous putting.
[Wind speed]	Select a wind speed: Light, Normal, or Strong.
[Distance]	Select measurement units in either Meters or Yards.
[Distance on the Green]	Select measurement units to the hole on the green in Meters, Feet, or Yards.
[Speed]	Select measurement units in m/s, km/h, or mph.
[Putting grid]	Specify the thickness of the grid line, either Normal or Wide.
[Double Par Mode]	With [On] selected, when a player reaches twice the number of strokes compared to par on the hole, that number is the player's final hole score. For example, when a player has played stroke 8 on a par 4, 8 is the final score and play passes to the next player. It is recommended to set it to [On] for rapid progress. [Off] will score all the player's strokes on a hole.
Scored	Turn on or off the score card

Default System options

To change the default System options, follow the steps below:

20. Touch **[System]**.
21. Refer to the instructions below to set the options. To revert to all the previous settings, touch **[Back]**.
22. To finish, touch **[Save]**.

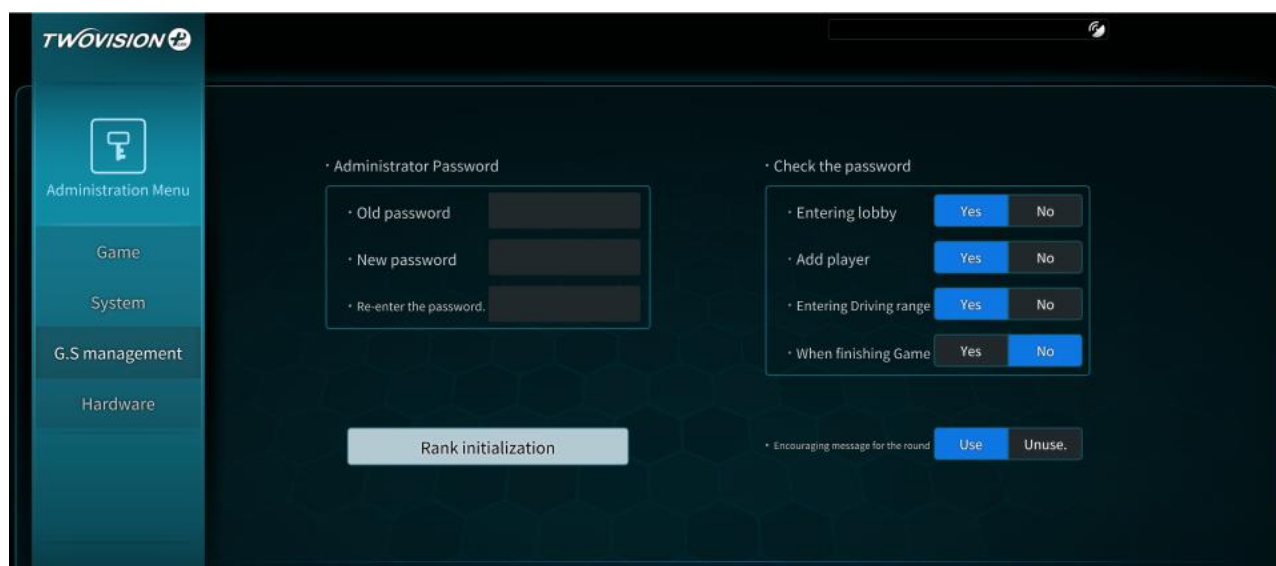


Options	How to set
Tee height	Set the default tee height from 1” to 2.4”. Normally this is 1.6”.
Swing plate	Set the default tilt of the swing plate: Normal, Hard or Pro mode, or Flat.
Hitting position	Set the default for the swing plate: [Left Hand] or [Right Hand].
Camera mode	Set [Broadcast], to track the ball in flight. Choose [Fixed] for the camera view to remain in place.
Display Resolution	Specify a screen resolution either 1400 x 1050 or 1920 x 1080.
Bottom Screen	Select either [On] or [Off] .
Mat type	Select either Tri-Mat or Penta-mat (Penta-mat is only available on Tour/Semi-Pro mode.)
Normal play	If you select [On] , a swing motion is played each time you hit the ball during a game.
Driving range	If you select [On] , a swing motion is played each time you hit the ball on the Driving Range.
Replay	Set the swing motion to View All, Driver, Wood, Iron, or Putter.
Sound mode	If 5.1-channel speakers are equipped select 5.1-channel otherwise select stereo.

GS Management

To change the administrator password and options to check the password, follow the steps below:

23. Touch [\[G.S management\]](#).
24. Refer to the instructions below to set the options. To revert to all the previous settings, touch [\[Back\]](#).
25. To finish, touch [\[Save\]](#).



Options	How to set
Administrator password	To change the Administrator password; enter the Old password, enter a New password, and Re-enter the new password.
Check the password	Select situations that require entering a password.
Rank initialization	Delete the ranking record of each golf course.
Encouraging message for the round	If you select [Use] , when a game is delayed and a certain amount of time elapses, a message encouraging you to play shows up. [Unuse] will not show a message.



Note

Screen alignment and GUI Display Setting are not applicable in TWOVISION Plus.

Troubleshooting



Caution

Please attempt to solve problems using the solutions provided in this chapter. If a problem persists even after the suggested remedy, contact Golfzon or your local authorized service provider for technical support.

Projector

The TEMP indicator of the projector turns on, but the projector does not operate.

This issue occurs when the temperature inside the projector rises suddenly. Remove the projector power cable and dust inside the filter, then re-connect the power cable and turn it on again.

The projector is on, but it is not working.

- Make sure that the lamp is correctly mounted.
- Turn off the projector, wait until it cools down, and then turn it on again.

The projector is turned on, but nothing is projected on the screen.

1. Close the TWOVISION Plus program.
2. Check that the projector is turned on.
3. Run the TWOVISION Plus program.

Swing Motion Camera

When the Swing Motion is played, the image is not clear.

Turn the focus ring of the camera installed on the front of the kiosk to adjust the focus properly.

Only some of the Swing Motion is played.

The camera timing has not been set properly. Please request service from Golfzon.

The ball position on the mat is different from the ball position on the main projector screen during play.

1. In the game menu or the driving range menu, touch **[Change view]**.
2. Enter administrator password, touch **[Enter]**, and touch **[OK]**.
3. Choose Left Hand or Right Hand.
4. Place the ball on the Fairway view and adjust the field of view of the camera using the left or right arrow buttons or touch **[Default]** to return to initial view.
5. Place the ball on the Bunker/Rough view and adjust the field of view of the camera using the left or right arrow buttons or touch **[Default]** to return to initial view.

I'm ready, but the TWOVISION Plus sensor of the kiosk doesn't light up.

Turn off the kiosk and turn it on again.

When hitting a ball, the ball flies too slowly.

Turn off the kiosk and turn it on again.

The sensor is not picking up the ball.

1. Open the bottom cover of the kiosk.
2. Power off the black box.
3. Turn it back on in 2 minutes.
4. Go to the Driving Range and test to see if the sensor picks up the ball.
5. If it won't recognize the ball, please request service from Golfzon.

The Auto Tee is not working.

1. Open the right or left hatch on the platform.
2. Please unplug the Auto Tee controller power cord on the white box underneath the hatch.
3. Plug the power cord back in after 1 minute.
4. Please check the Auto Tee in the game.
5. Check ball trough and make sure there are enough balls in the ball collector and the hose.
6. Check the condition of the balls. If the balls are worn and do not have enough dimples, the ball collector cannot push the balls through the hose.
7. If Auto Tee does not come up automatically, please request service from Golfzon.

Login

I cannot log in with my membership card.

Check that the orange indicator light on the card reader turns on and try again. If the indicator light is off, please request service from Golfzon.

The card reader is not working.

1. Open the cover at the bottom of the kiosk.
2. Disconnect the power cable connected to the card reader from the extension cord.
3. Re-plug the cord after 1 minute.
4. When the TWOVISION Plus login screen appears, check to see if the card reader's light flashes orange.
5. If the color doesn't change, please request service from Golfzon.

An error message says I cannot add players.

Or you may see a pop up saying you don't have enough owner balance and to contact the counter.

- Please request service from Golfzon.
- Our staff will check the remaining credit in your system and then may request a new charge.

Service Information

GOLFZON provides repair services and replacement parts. Email inquiry@golfzon.com for service.

With customer cooperation, many malfunctions can be solved remotely.

Warranty

GOLFZON protects the product under warranty when it is installed properly and used as detailed in this guide. The warranty expires 12 months after the product is installed. Extended warranty options are available. Contact your GOLFZON service representative for more information.

Limitation of Liability

Using the product in any way not described in this guide immediately voids the warranty on the product. The warranty does not apply in the following cases:

- Failure resulting from negligent or inappropriate use.
- Failure caused by improper preservation including, but not limited to, corrosion, dropping, and flooding.
- Failure resulting from repairs or modifications performed by any unauthorized party.
- Failure caused by force majeure events, including voltage fluctuation and natural disasters such as storm, fire, earthquake, and lightning.
- Use of any software other than that provided by GOLFZON.
- Modification of the software using reverse engineering tools, including, but not limited to, decompilers.

Consumables

The following items are consumables, not included in the warranty:

- Rubber tee of Auto Tee-Up device
- Golfzon golf balls
- All mats including fairway mat
- Projection screen
- Lamp and filter of projector

If the consumables are damaged or worn badly, request new consumables from GOLFZON.